

Zip Code 78666

Residential Statistics



September 2021

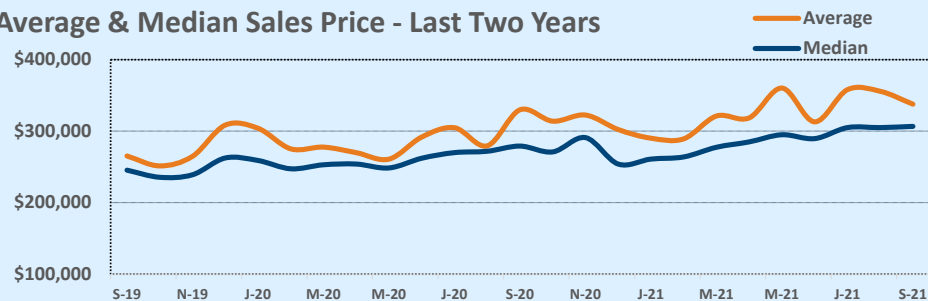
Listings	This Month			Year-to-Date		
	Sep 2021	Sep 2020	Change	2021	2020	Change
Single Family Sales	84	67	+25.4%	638	557	+14.5%
Condo/TH Sales	4	4	--	42	23	+82.6%
Total Sales	88	71	+23.9%	680	580	+17.2%
New Homes Only	12	10	+20.0%	87	121	-28.1%
Resale Only	76	61	+24.6%	593	459	+29.2%
Sales Volume	\$29,722,395	\$23,422,880	+26.9%	\$223,753,172	\$167,609,313	+33.5%
New Listings	--	--	--	--	--	--
Pending	48	58	-17.2%	249	604	-58.8%
Withdrawn	17	5	+240.0%	48	42	+14.3%
Expired	--	6	--	7	27	-74.1%
Months of Inventory	1.2	2.2	-46.4%	N/A	N/A	--

Price Range	This Month			Year-to-Date		
	New	Sales	DOM	New	Sales	DOM
\$149,999 or under	1	1	22	14	14	43
\$150,000- \$199,999	4	4	21	50	36	13
\$200,000- \$249,999	3	5	9	102	110	28
\$250,000- \$299,999	22	27	7	233	208	30
\$300,000- \$349,999	7	24	9	147	119	24
\$350,000- \$399,999	5	7	34	87	67	30
\$400,000- \$449,999	8	10	13	66	54	28
\$450,000- \$499,999	3	3	20	41	19	32
\$500,000- \$549,999	4	3	20	34	15	26
\$550,000- \$599,999	3	--	--	16	8	103
\$600,000- \$699,999	3	1	91	19	13	81
\$700,000- \$799,999	1	3	6	20	10	19
\$800,000- \$899,999	1	--	--	5	2	12
\$900,000- \$999,999	1	--	--	3	1	9
\$1M - \$1.99M	2	--	--	9	2	4
\$2M - \$2.99M	--	--	--	3	2	18
\$3M+	--	--	--	--	--	--
Totals	68	88	13	849	680	29

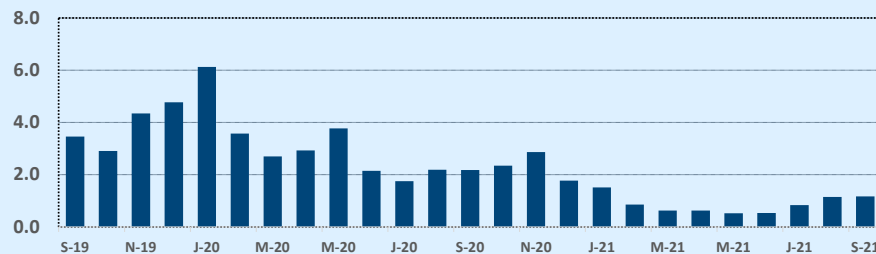
Average	This Month			Year-to-Date		
	Sep 2021	Sep 2020	Change	2021	2020	Change
List Price	\$334,419	\$338,926	-1.3%	\$323,213	\$295,467	+9.4%
List Price/SqFt	\$183	\$167	+9.9%	\$177	\$155	+14.4%
Sold Price	\$337,754	\$329,900	+2.4%	\$329,049	\$288,982	+13.9%
Sold Price/SqFt	\$185	\$164	+13.3%	\$181	\$152	+19.2%
Sold Price / Orig LP	101.2%	97.2%	+4.2%	103.2%	96.7%	+6.7%
Days on Market	13	69	-80.7%	29	80	-63.5%

Median	This Month			Year-to-Date		
	Sep 2021	Sep 2020	Change	2021	2020	Change
List Price	\$300,525	\$281,995	+6.6%	\$284,995	\$265,245	+7.4%
List Price/SqFt	\$172	\$156	+9.6%	\$170	\$149	+13.7%
Sold Price	\$306,685	\$279,148	+9.9%	\$291,793	\$264,096	+10.5%
Sold Price/SqFt	\$175	\$154	+13.4%	\$173	\$147	+18.0%
Sold Price / Orig LP	101.5%	98.0%	+3.6%	102.0%	98.0%	+4.1%
Days on Market	6	35	-82.9%	8	46	-82.6%

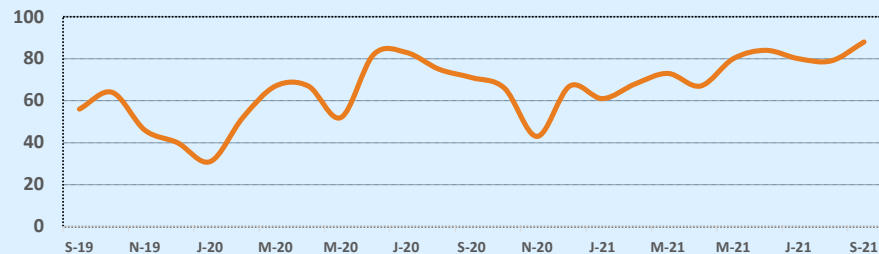
Average & Median Sales Price - Last Two Years



Months of Inventory - Last Two Years



Number of Sales - Last Two Years



Based on information from the Austin Board of REALTORS® (alternatively, from ACTRIS). Neither the Board nor ACTRIS guarantees or is in any way responsible for its accuracy. The Austin Board of REALTORS®, ACTRIS and their affiliates provide the MLS and all content therein "AS IS" and without any warranty, express or implied. Data maintained by the Board or ACTRIS may not reflect all real estate activity in the market.